

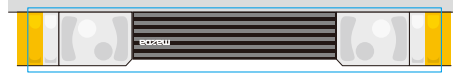
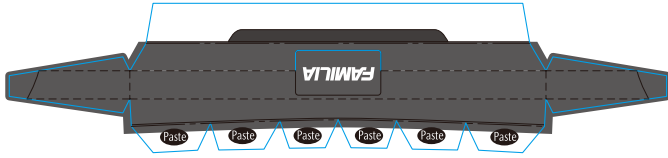


Mazda **FAMILIA**

Let's paint colors and draw pictures on the car body.
It will help to achieve "Zoom-Zoom" feeling!!

The fifth-generation Familia was released in 1980. The popular compact car was Mazda's first vehicle to use front-wheel drive. Well-loved for its sporty design and driving dynamics, the fifth-generation Familia set a new production record when it reached one million models in 27 months. Equipped with an electrically operated sunroof, the highest-grade Red XG received overwhelming approval, especially from young people. The fifth-generation Familia was named the 1980-1981 Japan Car of the Year.

Front under-guard



Cut-off line
 Mountain fold line
 Valley fold line
 Paste Margin of paper left for applying paste

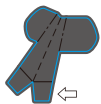


Attach this part under the body.

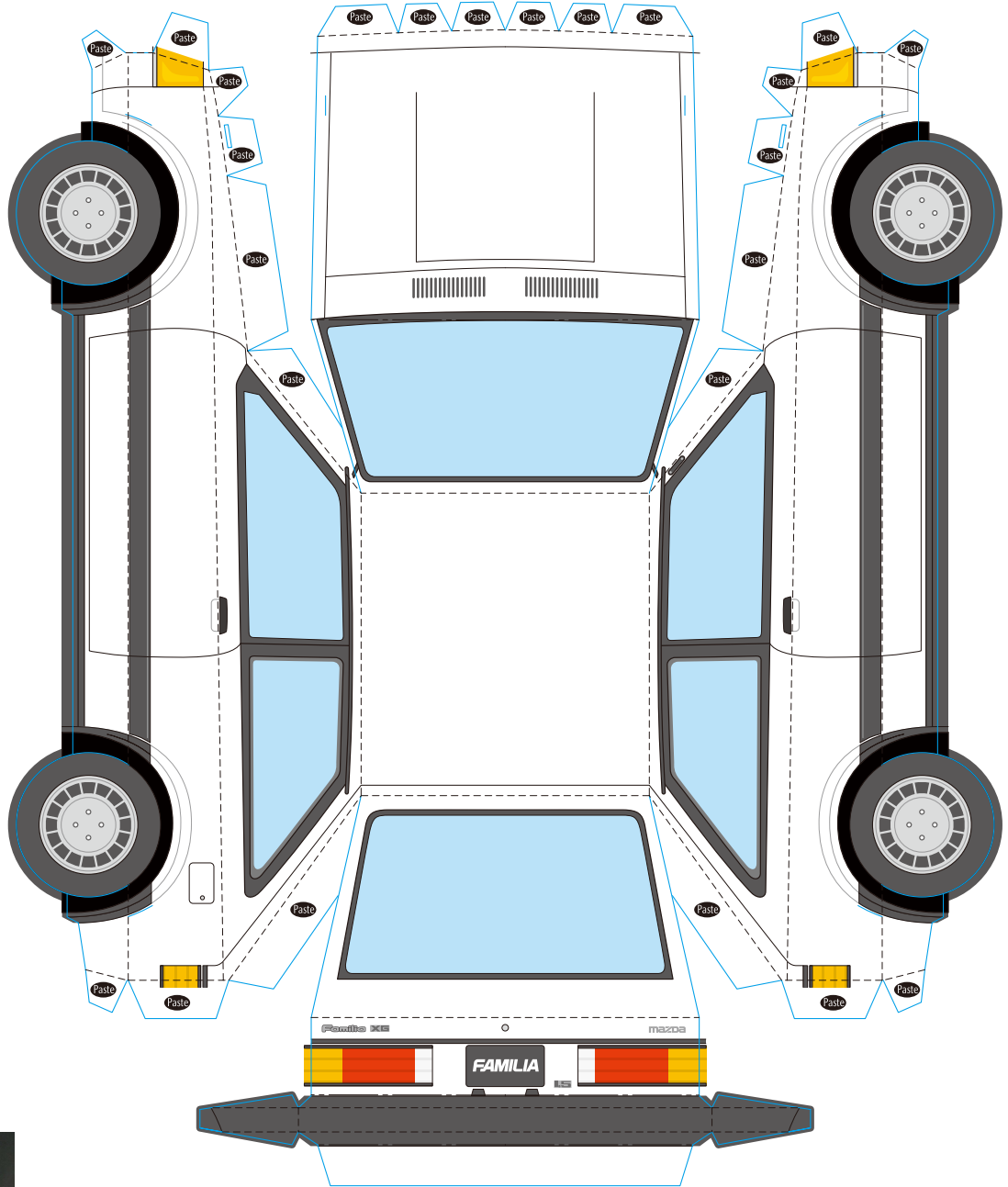


Left side-mirror

Right side-mirror



Apply paste on the reverse side of this part.



Completion image

Attention:

Please be careful when you use scissors, a knife or paste to make this paper craft.
Please be careful not to lose small parts.
Please keep this out of reach of infants.
For best results, we recommend using thicker, high quality paper.

This paper craft is freely available for individual use and distribution without charge.
However, it is prohibited EITHER to distribute this paper craft by sale OR to modify this paper craft template.